

MAX/AGV



Positioning of items for robot picking

SoftVision® Locate

Increases industrial robot picking accuracy!

SoftVision® Locate is a vision based system which improves picking precision for industrial robots. Some common applications include picking articles from a pallet, tray or conveyor.

The system uses both 2D and 3D technology to create an image of the object to be picked. Depending on the application, adaptations can be made to the system.

All system settings are configurable and utilizes pre-installed templates which makes the system flexible to be use for many different product types.

Statistics and reports can be exported in PDF format.

The system can be integrated with the industrial robot software.

Please contact or visit us on www.maxagv.com to read more about our systems!



3D Positioning



Inline



Product matching



Reports & Statistics

SoftVision® Locate is flexible and can be adapted to your specific products!

SoftVision® Locate stores product settings in pre-set templates. This enables many different types of product categories to be localised but by using only one single system.



“ SoftVision® Locate ensures your robot picks the right product! ”

SPECIFICATIONS

SYSTEM: SoftVision® Locate

Localization of details for industrial robot to pick item.

TECHNOLOGY: The system uses different technology depending on the purpose. 2D-technology is used if robot needs X, Y and rotation. If a complete 3D-image is needed, 3D-technology is used instead.

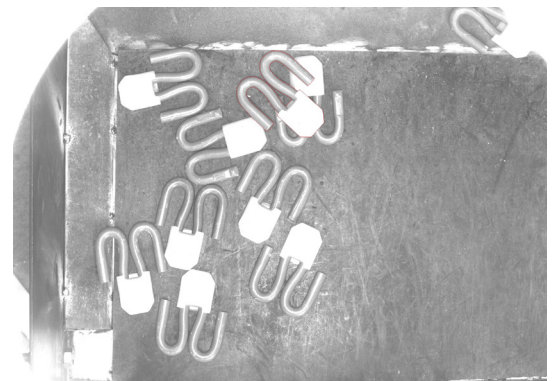
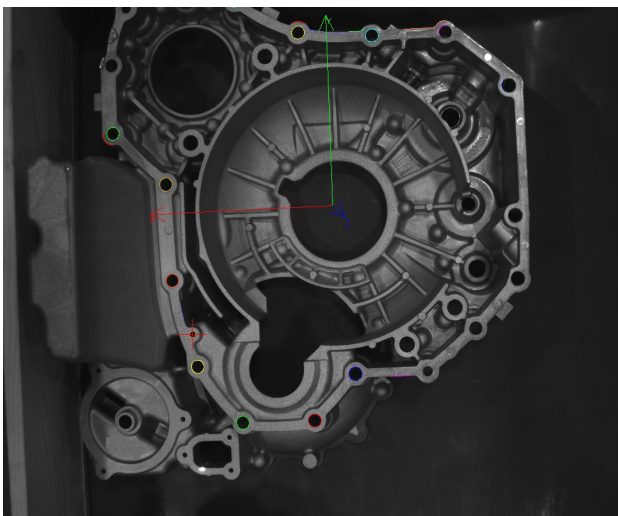
PERFORMANCE: Depends on the product size and chosen technology. Localising small items with 2D-technology takes about 50 ms.

HARDWARE: Pc Intel Core i7 processor, Windows 11.

REPORTS: Operator reports are generated for a specified time period and are stored as a PDF file.

The system can be integrated with the industrial robot software!

SoftVision® Locate can be used as an exterior sensor which is integrated directly with the industrial robot software, for example the ABB PickMaster. Everything from the control of image creation to delivery of information about the position of the item can be done via PickMaster.



Reports in SoftVision® Locate.

The system stores operational data from which a report can be generated for a specific time period. The report tells how many details have been picked and how many have been rejected. The report also displays the system's utilization level. Reports are exported as a PDF file.